



WHITE PAPER

Managing JD Edwards EnterpriseOne Menus

Table of Contents

Part One – The ALLOut Family	3
Part Two – Menus in EnterpriseOne	6
Part Three – Menu Management in a Grid	11
Part Four – Menu Projects	13

INTEGRATED WITH

ORACLE

JD EDWARDS ENTERPRISEONE

Part 1: The ALLOut Family of Modules for E1

We introduce the complete set of tools available as part of the ALLOut Family

Part 2: Menus in Standard EnterpriseOne

We show you how menus work in standard E1 and then show you how you can manage them using the ALLOut set of tools.

Part 3 and Part 4: Menu Management in ALLOut

We show you how you can use the ALLOut toolset to manage menus more effectively.

Part 1: The ALLOut Family of Modules for E1

Oracle continues to invest in EnterpriseOne and the security solutions it provides are improving in each version. However, the new features are not implemented into old versions which means that users of say Xe or 8.10 are marooned with the features they have.

ALLOut is focused on filling the gaps so that, no matter where you are in the E1 version cycle, you can still get the benefits of all the latest features plus more. The strategy is to keep what is right and fix what is wrong.

Standard EnterpriseOne – what’s not there

Reporting

- No basic reporting – [ALLOut Risk Reporting](#) provides full reporting for a user of the 10 security types (Application, Action, Row, Column, Processing Option, Hyper Exit, Tab, Exclusive, Solution Explorer and External Call) showing security that applies for the user and the security from each underlying role.
- No Critical Process reporting – [ALLOut Risk Reporting](#) provides reports for groups of programs that are involved in critical processes.
- No Segregation of Duties reporting – [ALLOut Risk Reporting](#) enables you to link the Critical Processes together and create Segregation of Duties rules and reports.

Menu Management

- Setting up and managing menus using the standard Menu Filtering program can be very time consuming. Very often sites find their menus “are in a mess” and undertaking an exercise such as translating menus can take too long. [The ALLOut Menu Management](#) module has an excellent set of tools to export, import and manage menus in a grid.
- Managing roles-based menus using the menu filtering tool can be very difficult and error prone. It is very difficult to compare menus between roles and the fact that security settings cause menu lines to “disappear” can cause confusion. The [ALLOut SuperGrid](#) addresses these issues by enabling menu filtering and security management through a grid.
- In older tools releases, Menu Filters (Fine Cut) do not merge for a user with multiple role assignments – [ALLOut CombiRoles](#) merges Menu Filters so a user sees one menu structure.

Security Management – P00950

- Security file delivered empty – [ALLOut ProjectPlus](#) provides automatic set-up (see separate white paper)
- No link between menus, security and roles – [ALLOut SuperGrid](#) provides the link
- Standard program exceptionally clumsy to use – [ALLOut 950SuperGrid](#) provides security update through a grid.

- Standard program not action code protected – [ALLOut 950SuperGrid](#) is fully action code enabled.

Row and Business Unit (Type 4) Security Management

- Row security only at user or role level – [ALLOut CombiRoles](#) provides multiple role based security management for row security.
- Row security can be slow – if you have inadvertently set-up row security so that you have overlapping settings, [ALLOut CombiRoles](#) will concatenate the settings and hence improve performance.
- Exclusive to Inclusive - [ALLOut Conversion Solution](#) enables easy conversion to an inclusive row security model.

Multiple Roles Management – P95921

- Limit of 40 roles per user - [ALLOut CombiRoles](#) enables “roles within roles”
- No role allocation audit trail – [ALLOut CombiRoles](#) provides an audit trail
- No alert for Segregation of Duties breach – [ALLOut CombiRoles](#) will stop a role allocation that will cause a SOD breach requiring specific override action
- Xe and ERP8 does not support multiple security roles for a user – [ALLOut CombiRoles](#) provides multiple roles (and all of the above functionality as well) for Xe & ERP8.

Part 2: Menus in EnterpriseOne

Understanding Menus in E1

The menu structure in standard E1 is based on 2 tables:

- F9000 – the Menu table itself
- F9001 – the Menu Relationships – that displays the sequence the menus lines appear on the menu

What appear to be different menus are, in actual fact, selected lines from the menu table.

This is why a menu is called a “View” or “Task View” – it is simply a selected view of a set of records in the menu table itself.

The views are given a number - for example – you may have a set of Task Views that look like this –

- 101 – End User Menus – the standard set that, in some versions of E1, come pre-defined in the system.
- 97 – Power Users Tasks

In your site you need to make a copy of the standard set and customize it to meet your specific requirements.

Menu Table – F9000

Menu Table – F9000
One Line for Each Menu Line

This table simply consists of records that correspond to lines on the menu.

Some important Task Types

- “00” are the main Task View Header Records
- “07” are the folders
- “01” are the programs
- “02” are the UBEs

You can use program P9000 to see and change menu lines.

Task View Table – F9001

Task View Table – F9001

Relationship between Menu Lines so you see a complete Task View Menu

This table consists of relationship records that show a Parent/Child relationship for each menu line.

When this is displayed in a menu you will see a “00” record at the top – this is the main Task View Name.

You will then see type “07” records for each of the folders.

The lines on the menu that link to a program are typically “01” for programs and “02” for UBEs.

Presentation Sequence determines the sequence the lines appear in the menu.

Working With Menus

In the standard E1 Menu Management program you work with both tables at the same time.

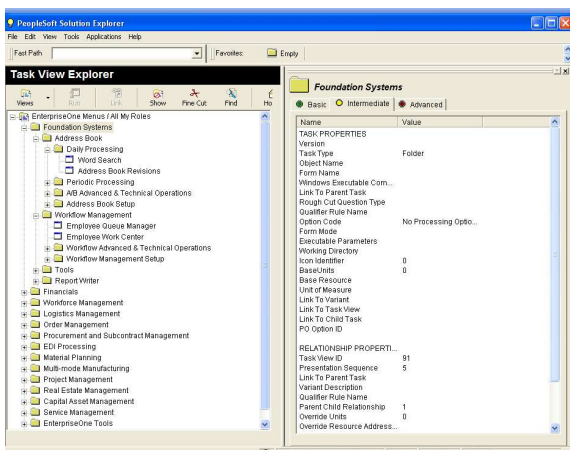
Changing existing menu lines is relatively straight forward – you right click on the line you wish to change and you have a window that enables you to make the change.

Inserting a new line requires you to firstly create the line in the menu and then build the relationship so that it appears in the right place in the Task View.

It helps if you open up the Task Properties window so you can see the relationship numbers.

ALLOut Menu Management in a Grid makes understanding menus and managing them much easier.

Menu with Task Properties Pane



Working with Menus in standard E1

Open the Task Properties pane

Select the Task Properties pane - View/Show/Task Properties and you will see -

Top half – “Task Properties” these are the values from the Menu Table F9000

Bottom half – “Task Relationships” these are the values from the Relationships table F9001

ALLOut Menu Management in a Grid makes understanding menus and managing them much easier.

Best Practice for Menus

Is there a “best practice” for setting up menus and Task Views?

Most sites maintain a single “Master” Task View – and have separate “copies” for different languages.

Open vs Closed

Why does it affect Menus?

What a user sees on their menus is dependent on their role allocation, menus filtering **and application security**.

Application security – if a user does **not** have access to a program then it will not appear on their menu.

Menu Filtering in a closed system – is therefore limited to hiding folders.

Menu Filtering in an open system - requires you to hide both folders and tasks (programs).

Is Menu Filtering needed in a closed system?

In an “Open” security system menu filtering is essential.

In a “Closed” system it is not as important as programs are automatically hidden if a user does not have access to it.

However, it is all about minimising the amount of time a user wastes navigating around the system – “clicks cost money” – and so hiding redundant folders is certainly best practice.

The ALLOut Menu Filtering is a Grid program helps tremendously in applying detailed menu filters.

Putting it all together - Applying Roles to Users

Roles and users are held in the F0092 table.

Role to user relationships are held in the F95921 table

Applying multiple roles to users is a relatively straight forward process.

A user is assigned multiple roles and when they sign-on they see a merged menu structure (Tools release 8.97 and higher) and merged security.

For menus this works well.

For security, particularly for larger sites, it doesn't. This is a subject of a different ALLOut White Paper – and of a different ALLOut Product – CombiRoles.

In fact, multiple roles for users deliver significant benefits. The fact that so few sites actually take advantage of them is unfortunate.

ALLOut modules for menus, security and conflict management enables you to make effective use of multiple roles.

The menu management products are described in this following section.

Part 3: Menu Management in a Grid

These are the Programs:

- Menu Management in a Grid
- Menu Export
- Menu Import
- Fine Cut in a Grid

Depth	Task Type	Task Description	Task Name	Task Text	Presentation Sequence	ON Type	Object	Form	Version
00	Folder		101	End-User Tasks	0				
1	Folder		RM021220	General Accounting	20				
2	Folder		RM021098	Manage Budgets	10				
3	Folder		RM021914	Enter Annual Budgets	10				
3	Application		BFM04407653750	Create Budget Pattern Codes	20	APPL	P09001	W06001B	
3	Application		BFM04407653792	Assign Budget Pattern Codes	30	APPL	P1441	W1441A	
3	Application		BFM04407690984	Work with Annual Budget by Business Unit	40	APPL	P14102	W14102A	RS0001
3	Application		BFM04407691024	Work with Annual Budget by Account	50	APPL	P14103	W14103B	RS0001
3	UBE		BFM04407690405	Spread Budget Amounts to Periods	60	UBE	R14001		XJCE0001
3	UBE		JCE030456	Generate Forecast Basis	70	UBE	R1403		
3	UBE		JCE030457	Generate Forecast Results	80	UBE	R1404		
3	UBE		JCE030458	Apply Forecast To Budget	90	UBE	R1407		
3	UBE		JCE030459	Budget Import Field Mapping	100	UBE	R1410M		
3	UBE		JCE030460	Budget Worksheet	110	UBE	R14113		
3	UBE		JCE030461	OIL Budget Checking Report	120	UBE	R14115		
3	UBE		JCE030462	Spread Annual To Periods	130	UBE	R14001		
3	Folder		RM021915	Enter Detail Budgets	20	APPL	P14101	W14101C	RS0001
3	Application		BFM044076673145	Enter Detailed Budgets by Account	20	APPL	P14101	W14101C	RS0001

Menu Management in a Grid

ALLOut Menu Management in a Grid is similar to the standard E1 program in that it –

- Is Task View based
- You see both menu data and menu relationships in the same grid

But because you are working in a grid format rather than a “drag and drop” format it is much easier to control the process.

Inserting, changing and deleting menu lines is very simple.

Similarly, changing the sequence that the lines appear on the menu is much easier, particularly if you have a “folders within folders” structure.

And, as there is a QBE line, you can filter the grid to just display the folders or folder depth.

Line Type	Task Name	Task ID	Called Form	Called Version	Object Name	Secure Form	Secure Version	1	2	3	4	5
Folder	End-User Tasks	101										
Folder	Accounts Payable	RM021220										
Folder	Process Purchasing Related Vouchers	BFM021911										
Task	Enter Logged Voucher Batch	BFM0440373	W04110	RS0000	P0411							
Task	Re-distribute Logged Voucher	BFM0440373	W043002A	RS0001	P042002							
Task	Match Invoice to Receipt or Purchase	BFM0440373	W04110	RS0002	P0411							
Task	Create Voucher Match Reversal	BFM0440373	W04110	RS0002	P0411							
Task	Evaluated Receipt Settlement	00001		JCE0001	P43000							
Folder	Process Non-Purchasing Related Voucher	BFM021914										
Task	Work With Supplier Master	BFM06119	W04012D	RS0001	P04012							
Task	Create Voucher Match (2 way)	BFM06121	W04110	RS0002	P0411							
Task	Enter Standard Voucher Batch	BFM0440373	W04110	RS0001	P0411							
Task	Enter Standard Voucher Batch	BFM0440373	W04110	RS0001	P0411							
Task	Enter Speed Voucher Batch	BFM0440373	W04110VA	RS0001	P0411SV							
Task	Enter Recurring Voucher Batch	BFM0440373	W04110	RS0002	P0411							

Fine Cut Management in a Grid

ALLOut 3-Way-SuperGrid Roles enables you to see multiple roles, menus and security in a grid.

You can see the fine cut and you can change the fine cut.

And you can also see the application and action security in the form of “A’s”, “C’s” & “D’s” in the grid.

Perfect for comparing roles and for splitting roles.

Menu Export is a UBE

You select the Task View you are interested in exporting and the program generates a download of your menu into Excel format.

Menu Import from Excel into a Grid

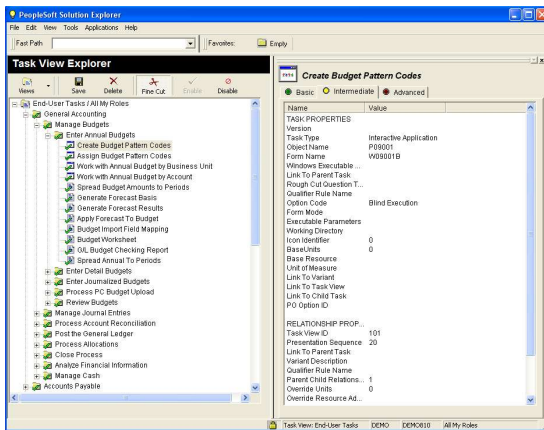
A simple grid that allows you to import your menu tree and update your menu table and menu relationships table automatically.

Part 4: Menu Projects

Ideas for project to improve your menus

- Menu Restructuring
- Roles Menus and Menu Filtering
- Translating Menus
- Converting OneWorld menus to Solution Explorer

Folders within Folders



Project - Menu Re-structuring

- Menu “Tidy-up”
- Create shallow Menus

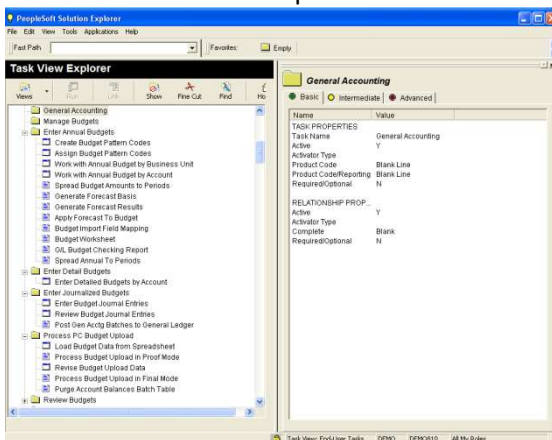
Re-structuring menus is a major exercise in standard E1. It is difficult to get complete visibility of the menu tree and making changes is very clumsy.

Here is a simple procedure you can follow to re-structure your menus so they are only one folder deep.

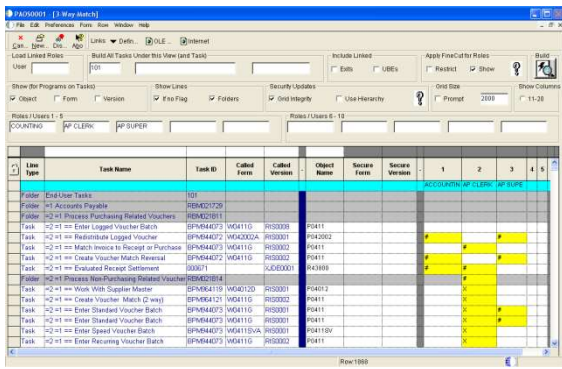
You can incorporate menu changes as part of this project.

- Export your menu tree to Excel using ALLOut Project+ Menu Export
- In Excel
 1. Delete data from redundant columns
 2. Change each folder (Task Type 7) to have a depth of 1
 3. Change each Task (Task Types 1 and 2) to have a depth of 2
 4. (For menu re-structuring projects - now make any changes to your menus to meet your new requirements)
- Import your menu tree back into Excel using ALLOut Project+ Menu Import
- Review and fine tune using ALLOut Project+ Menu Management in a Grid

Folders “one click” deep



Time taken to complete project – 1 hour + time to change menus.



Menu Filtering in a Grid – Open Security System

ALLout SuperGrid - this product is primarily designed to enable you to see roles menus and security all in one grid.

It works equally well in both an open and a closed environment (see sidebar).

Load the SuperGrid with the roles you wish to compare.

Load the menus and menu filters.

See the menu filters (in yellow) and change as necessary.

You can filter out individual tasks.

Or you can filter out the entire folder. If you hide the folder then all folders or tasks underneath it are also hidden.

Make your changes and update.

There is an option to export to Excel.

Menu Filtering in a Grid – Closed Security System

As above but you are usually not interested in Task level filtering as Application Security hides programs on menus.

Take the option to hide the tasks.

Display the menu and menu filtering and make changes as required.

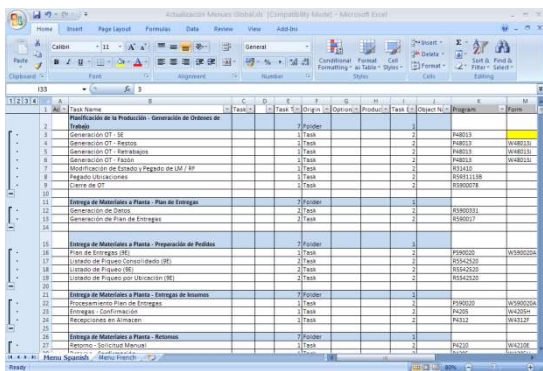
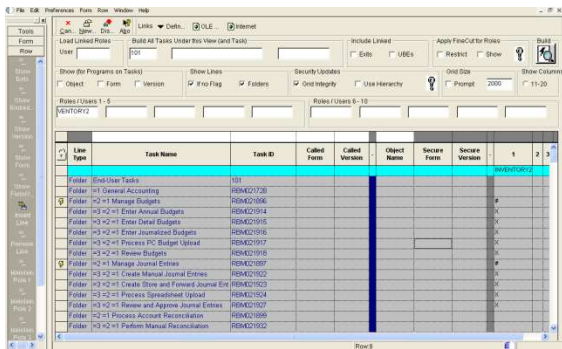
Project - Translating Menus

Having a menu tree in a user's native language is a tremendous help in speeding up daily tasks and eliminating mistakes.

Here is a simple procedure you can follow to translate your menus.

- Create a standard "Master Menu"
- Export your menu tree to Excel using ALLout Project+ Menu Export
- In Excel
 1. Create a blank column alongside the column that needs to be translated.
 2. Have a bi-lingual Application Lead do the translation
 3. Delete the original language column
- Import your menu tree back into Excel using ALLout Project+ Menu Import

SuperGrid in a Closed system – manage folders



Time taken to complete project – 1 hour –
plus time to do the translation

Project - Converting OneWorld Menus to Solution Explorer

Old OneWorld Explorer Menus - Xe sites typically have a set of menus that have been customised to meet the requirements of different parts of the business.

A user is then allocated one of the menus in their profile.

Solution Explorer and Multiple Roles - Best practice with Solution Explorer is to have one menu tree (Task View) and then use Menu Filtering so that each role sees a subset of the menu.

Users are allocated to multiple roles and the user sees a merged menu tree based on their role allocation.

Project

Thus the starting point is multiple standard menus and each user having one menu.

And the end point is

- A single menu tree – (this sub-project)
- Role based menu filtering
- Multiple roles allocated to a user

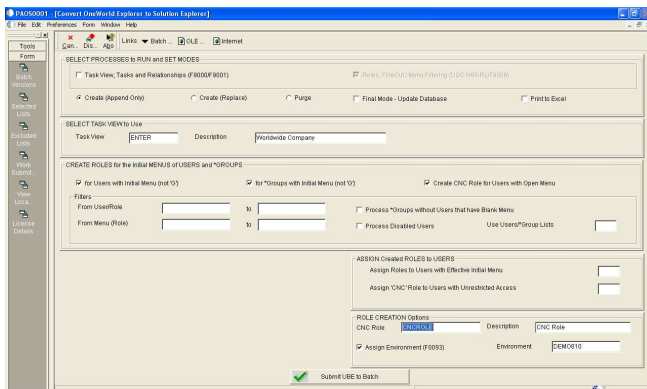
So when the user signs on they are presented with one consolidated menu tree.

Standard E1

There is a standard E1 UBE that will translate the old OneWorld Menus into Solution Explorer – R9000C.

This program will populate the F9000 menu table generating folders and tasks from the OneWorld Explorer menu tree. It will also sequence the records in the F9001 table so that you see the menu structure as it was displayed in the old menus.

However, it will not create Roles or Role based Fine Cut.



ALLOut Conversion from OneWorld Menus to Solution Explorer

The ALLOut UBE to convert OneWorld Menus works for all versions of JDE – Xe and upwards.

It has an intuitive front end that enables a knowledgeable Security Officer or CNC person to step through the processing options so you can achieve your objectives.

The end result is (depending on options taken) –

- A single menu tree (F9000 & F9001 Tables)
- Roles with role based Task Views
- Fine Cut for roles (F9006 Table)
- User to role assignments

The screenshot shows the 'Menu Maintenance' application window. The main area contains a grid with the following columns: Depth Value, Depth, Task Type, Task Type Description, Task Name, Task Text, Presentation Sequence, Obj Type, Object, Form, and Version. The grid lists various menu items, including folders and applications, with their respective IDs and descriptions.

Depth Value	Depth	Task Type	Task Type Description	Task Name	Task Text	Presentation Sequence	Obj Type	Object	Form	Version
	00	Folder		101	End-User Tasks	0				
1	=1	Folder		REM021728	General Accounting	20				
2	=1 =2	Folder		REM021898	Manage Budgets	10				
3	=1 =2 =3	Folder		REM021914	Enter Annual Budgets	10				
3	=1 =2 =3 ==	01	Application	BPM04407653750	Create Budget Pattern Codes	20	APPL	P09001	W09001B	
3	=1 =2 =3 ==	01	Application	BPM044076539792	Assign Budget Pattern Codes	30	APPL	P1441	W1441A	
3	=1 =2 =3 ==	01	Application	BPM044076560984	Work with Annual Budget by Business Unit	40	APPL	P14102	W14102A	R00001
3	=1 =2 =3 ==	01	Application	BPM044076561924	Work with Annual Budget by Account	50	APPL	P14103	W14103B	R00001
3	=1 =2 =3 ==	02	UBE	BPM044076569495	Spread Budget Amounts to Periods	60	UBE	R14001		XUDE0001
3	=1 =2 =3 ==	02	UBE	JCE030456	Generate Forecast Basis	70	UBE	R1403		
3	=1 =2 =3 ==	02	UBE	JCE030457	Generate Forecast Results	80	UBE	R1404		
3	=1 =2 =3 ==	02	UBE	JCE030458	Apply Forecast To Budget	90	UBE	R1407		
3	=1 =2 =3 ==	02	UBE	JCE030459	Budget Import Field Mapping	100	UBE	R1410M		
3	=1 =2 =3 ==	02	UBE	JCE030460	Budget Worksheet	110	UBE	R1411B		
3	=1 =2 =3 ==	02	UBE	JCE030461	OL Budget Checking Report	120	UBE	R1411E		
3	=1 =2 =3 ==	02	UBE	JCE030462	Spread Annual To Periods	130	UBE	R14801		
3	=1 =2 =3	07	Folder	REM021915	Enter Detail Budgets	20				
3	=1 =2 =3 ==	01	Application	BPM044076673145	Enter Detailed Budgets by Account	20	APPL	P14101	W14101C	R00001

Menu Management in a Grid

Once the conversion has taken place you can use the "Menu Management in a Grid" program to fine tune the Task Views.

SuperGrid

You can also use the 3WaySuperGrid to fine tune Menu Filtering (and security).

Email hazel.jackson@alloutsecurity.com for our Product Briefs or visit www.alloutsecurity.com